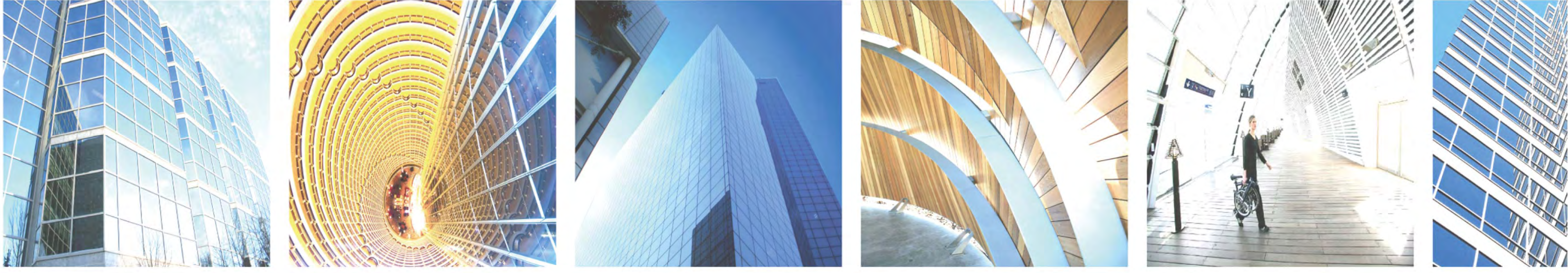


Your Wholesale Source for CCTV and DVR Products



**EASTERN
STERN
CCTV**

**CATALOG
2010-2011**



Introduction

EasternCCTV (USA), located in New York, is a leading provider in design, development, manufacture and distribution of CCTV products.

We carry a full line of quality assured CCTV products, which include all types of cameras, DVRs, and related accessories. As a technology based company, we always keep up with the latest technology and continuously launch new products to let us stay in the front of today's security market.

We are committed to promoting high quality products with competitive price to meet the demand of today's increasingly competitive market. At EasternCCTV, we firmly believe, "Success results from providing our clients with innovative, superior quality products that are competitively priced".

In addition, health growth and good reputation are the main ideas that we strive for.

Founded in 2000, EasternCCTV has run its business successfully. We take great pride in the growth that we have experienced, and will continue to strive for best to meet the expectations of our clients, business partners and employees.

As always, we stay open to any suggestions. We do appreciate all suggestions from our clients, business partners and employees that helped us made a lot of improvements in the past few years.

We are looking forward to listening from you.



HD Camera Professional Camera Dome Camera	1, 2, 3	ED6000ME Standalone DVR ED6800MD Standalone DVR ED6900HE Standalone DVR ED6900FD Standalone DVR	15, 16, 17, 18
WDR Camera Infrared Camera Vandalproof Camera Mini & Covert Camera	4, 5~7, 8	ED Series CMS Introduction DVR4200 Standalone DVR & Kit	19~20, 21~22
NC Series Camera PTZ Camera PTZ Controller & Accessories	9, 10, 11	Processor, CCTV Lens & Monitor LCD Bracket & IR Illuminator Power Box & Adaptor	23, 24, 25
Spy & Fun DVR ED Series DVR Board ED Series DVR Complete System	12, 13, 14	Video Balun Signal Extender Video Amplifier & Tester Tools Power Box & Adaptor Accessories	26, 27, 28

INDEX

HIGH DEFINITION CAMERA

SONY Effio



Sony 3rd Generation CCD & DSP

700 TV Lines in Color

Super Head-Light Supression

Digital Noise Reduction

OSD Menu



HD-B09880



HD-D09880AVF



HD-IR9842VF



HD-IR9871VF



HD-IR9542VFH



HD-IR9542VFH

SPECIFICATION

C	Sensor	1/3 Super HAD II CCD
C	Total Pixels	811(H) x508(V)(NTSC)/ 785(H)x595(V)(PAL)
D	Effective Pixels	768(H)x494(V)(NTSC)/ 752(H)x582(V)(PAL)
D	Scanning System	2:1 Interlace
D	Synchronization	Internal/line lock
D	OSD	Available
D	Dynamic Range	52dB(x128)
E	Backlight Compensation	WDR/BLC/OFF Selectable
E	Resolution	Color: 700 TV Lines; B/W: 750 TV Lines
L	S/N(Y signal)	52dB(AGC Off,Weight ON)
E	Min.illumination	Color Mode: 0.6 Lux/0.003 Lux (sens-up on) B/W Mode: 0.1 Lux/0.0001 Lux (sens-up on)
C	White balance	ATW/AWC/Manual/Outdoor (1800° K ~10,500° K) Indoor(4500° k ~8,500° k)
C	Shutter speed	1/60sec~1/120,000sec 1/50sec~1/120,000sec
T	Sense-up	Auto/Fixed/Off(selectable limit x2~x512)
R	Gain Control	Low ,Middle, High,Off Selectable
R	3D-DNR	Off/On(1~63 Level Adjustable)
I	Motion Detection	On/Off(8 Zone, Alarm Output)
I	Privacy Masking	On/Off(8 Zone)
C	Mirror(H-REV)	On/Off
C	Flip(V-REV)	On/Off
A	Freeze	On/Off
A	Sharpness	On/Off(Level Adjustable)
L	D&N Selection	Color/B&W/Auto/EXT
L	Stabilizer	On/Off
L	Digital Zoom	On(x6)/Off
L	Blemish Compensation	256 point (Even 128 point ,ODD 128 Point)
L	Power	DC12V&AC24V Dual Power
L	IRIS Control	DC
L	Operating Temp./Humidity	-10° C to+ 50° C/30% to 80%RH
L	Storage Temp./Humidity	-20° C to+ 60° C/20% to 90%RH
L	Dimension	115mm(L) x 70mm(W) x 62mm(H)
L	Weight	0.4Kg

FEATURE

High Resolution

By adopting SONY SUPER HAD II CCD (960H), the camera produces clear picture with a horizontal resolution of 700 TV lines for color, and 750 TV lines for B/W.

Super Wide Color Temperature Adaption

By adopting Sony unique DSP color temperature computing technology, within a wide color temperature range, the camera can adapt changing of color temperature, avoid color distortion when under different color temperature.

Adaptive Tone-curve Reproduction (ATR)

By adopting Sony unique DSP Technology, automatically detect dark zone of the image, perform real-time color adjustment & correction on backlight & dark zone, reproduce natural, clear image.

Super Head-light Suppression

By adopting Sony unique DSP head-light suppression Technology to ensure the image exposure evenly, view dark object which around strong light clearly.

DNR (Digital Noise Reduction)

By adopting unique digital processing technology, it can reduce the luminance and chrominance noise separately, and produce clear, obvious images by not affecting image resolution.

Motion Detection (4 Zone)

The camera detects motion and generates signals without any additional external sensors.

Privacy masking function (4 Zone)

Can set 4 different zones for privacy masking.

OSD

The camera supports OSD function.

PROFESSIONAL CAMERA



BO6400

- **1/4" Sony Super HAD II CCD**
- Effective Pixels: 510 (H) x 492 (V)
- 420 TV Lines; 1.0 Lux @ F1.2
- ELC AGC AWB BLC
- Video / DC Drive Lens
- C or CS Mount Lens
- 12V DC



BO6440

- **1/3" Sony Super HAD II CCD**
- Effective Pixels: 510 (H) x 492 (V)
- 420 TV Lines; 1.0 Lux @ F1.2
- ELC AGC AWB BLC
- Video / DC Drive Lens
- C or CS Mount Lens
- 12V DC



550 TV Lines

BO9880DN

- **1/3" Sony Super HAD II CCD**
- Effective Pixels: 768 (H) x 494 (V)
- **550 / 570 TV Lines**
- 1.0 Lux (Day) / 0.1 Lux (Night) @ F1.2
- ELC AGC AWB BLC
- Video / DC Drive Lens
- C or CS Mount Lens
- 12V DC & 24V AC **Dual Voltage**



BO9900

- **1/3" Sony Super HAD II CCD**
- Effective Pixels: 768 (H) x 494 (V)
- **Digital WDR Function**
- **600 / 650 TV Lines**
- 0.3 Lux (Day) / 0.0001 Lux (Night, Sens-Up on)
- Super High Quality Image
- Digital Noise Reduction
- Built-In OSD For Function Controls
- 12V DC & 24V AC **Dual Voltage**

DOME CAMERA



DO5400

- **1/4" Sony Super HAD II CCD**
- Effective Pixels: 510 (H) x 492 (V)
- 420 TV Lines; 1.0 Lux
- ELC AGC AWB BLC
- 3.6mm Fixed Lens
- 4" Diameter
- 12V DC



DO5440

- **1/3" Sony Super HAD II CCD**
- Effective Pixels: 510 (H) x 492 (V)
- 420 TV Lines; 1.0 Lux
- ELC AGC AWB BLC
- 3.6mm Fixed Lens
- 4" Diameter
- 12V DC



550 TV Lines

DO9880

- **1/3" Sony Super HAD II CCD**
- Effective Pixels: 768 (H) x 494 (V)
- **550 TV Lines**; 1.0 Lux
- ELC AGC AWB BLC
- **3.6mm Fixed Lens**
- 4" Diameter
- 12V DC



550 TV Lines
Vari-Focal

DO9880AV-DN

- **1/3" Sony Super HAD II CCD**
- Effective Pixels: 768 (H) x 494 (V)
- **550 / 570 TV Lines**
- 1.0 Lux (Day) / 0.1 Lux (Night)
- ELC AGC AWB BLC
- **Auto Iris 3.5 ~ 8mm Vari-Focal Lens**
- Day & Night
- 12V DC



24IR

DO5440-IR

- **1/3" Sony Super HAD II CCD**
- Effective Pixels: 510 (H) x 492 (V)
- 420 TV Lines
- 24 IR; 0 Lux
- IR Distance : 40 Feet
- 3.6mm Fixed Lens
- AGC AWB BLC
- **Indoor Use**, 12V DC

WIDE DYNAMIC RANGE CAMERA



WDR
540 TV Lines

BO9950DN

- 1/3" Pixim Digital Pixel System Image Sensor
- **Day & Night (ICR)**
- PAL / NTSC Selectable
- 540 TV Lines
- OSD Menu
- 0.5 Lux / 0.08 Lux (Slow Shutter) @ F1.2
- **Wide Dynamic Range**
101dB Typical, 120dB Maximum
- 12V DC & 24V AC **Dual Voltage**



WDR
540 TV Lines **42 IR**
Vari-Focal

IR9942VF

- 1/3" Pixim Digital Pixel System Image Sensor
- **Day & Night (ICR)**
- PAL / NTSC Selectable
- 540 TV Lines
- OSD Menu
- 42 IR; 0 Lux; IR Distance: 60 Feet
- **Wide Dynamic Range**
101dB Typical, 120dB Maximum
- **4 ~ 9mm Vari Focal Lens**
- 12V DC



540 TV Lines

VP9950MI

- 1/3" Pixim Digital Pixel System Image Sensor
- PAL / NTSC Selectable
- 540 TV Lines
- 0.5 Lux / 0.08 Lux (Slow Shutter)
- **Wide Dynamic Range**
101dB Typical, 120dB Maximum
- 3.6mm Fixed Lens
- **Vandalproof Mini Case, 3.5" Diameter**
- 12V DC



540 TV Lines
Vari-Focal

VP9950AV

- 1/3" Pixim Digital Pixel System Image Sensor
- PAL / NTSC Selectable
- 540 TV Lines
- 0.5 Lux / 0.08 Lux (Slow Shutter)
- **Wide Dynamic Range**
101dB Typical, 120dB Maximum
- **3.5 ~ 8mm Vari-Focal Lens**
- **Vandalproof**
- 12V DC

Image Comparison With CCD Camer

Extreme Lighting



Wide Dynamic Range



INFRARED CAMERA



21IR

IR8215

- 1/4" Sony Super HAD II CCD
- Effective Pixels: 510 (H) x 492 (V)
- 420 TV Lines
- AGC AWB BLC
- 21 IR; 0 Lux
- IR Distance: 40 Feet
- 3.6mm Fixed Lens
- Weatherproof; 12V DC



21IR
Cable
Concealed

IR8221-E

- 1/4" Sony Super HAD II CCD
- Effective Pixels: 510 (H) x 492 (V)
- 420 TV Lines
- AGC AWB BLC
- 21 IR; 0 Lux
- IR Distance: 40 Feet
- 3.6mm Fixed Lens
- Weatherproof; 12V DC



21IR
Cable
Concealed

IR9021-E

- 1/3" Sony Super HAD II CCD
- Effective Pixels: 510 (H) x 492 (V)
- 420 TV Lines
- AGC AWB BLC
- 21 IR; 0 Lux
- IR Distance: 40 Feet
- 3.6mm Fixed Lens
- Weatherproof; 12V DC



35IR
Cable
Concealed

IR9035-E

- 1/3" Sony Super HAD II CCD
- Effective Pixels: 510 (H) x 492 (V)
- 420 TV Lines
- AGC AWB BLC
- 35IR; 0 Lux
- IR Distance: 50 Feet
- 3.6mm / 6mm Fixed Lens
- Weatherproof; 12V DC



56IR
Cable
Concealed

IR9056-E

- 1/3" Sony Super HAD II CCD
- Effective Pixels: 510 (H) x 492 (V)
- 420 TV Lines
- AGC AWB BLC
- 56 IR; 0 Lux
- IR Distance: 70 Feet
- 4mm / 8mm Fixed Lens
- Weatherproof; 12V DC



42IR
Cable
Concealed

IR9042

- 1/3" Sony Super HAD II CCD
- Effective Pixels: 510 (H) x 492 (V)
- 420 TV Lines
- AGC AWB BLC
- 42 IR; 0 Lux
- IR Distance: 60 Feet
- 4mm / 6mm Fixed Lens
- Weatherproof; 12V DC



42IR
550 TV Lines
Cable
Concealed

IR9842-H

- 1/3" Sony Super HAD II CCD
- Effective Pixels: 768 (H) x 494 (V)
- 550 TV Lines
- AGC AWB BLC
- 42 IR; 0 Lux
- IR Distance: 60 Feet
- 4mm Fixed Lens
- Weatherproof; 12V DC